

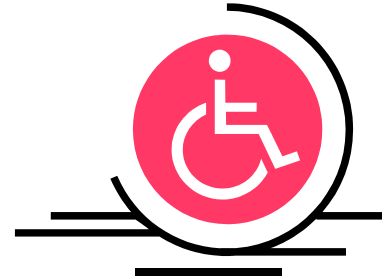
---

## NOTICE TO RESIDENTS

### Strata Plan NW 917 – Cherry Tree Place

### *Special Needs*

---



Dear Residents:

If you have special needs, please advise Management so that you may be added to the Fire Department Lock Box. This will help to ensure that you get out of the building in case of an emergency.

**Thank you.**

Steve Maddess  
Strata Manager  
*Per the Owners*  
*Strata Plan NW 917*

SM/cn